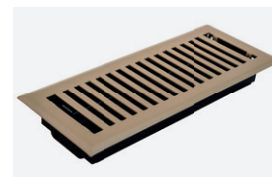


# Ventilation Range



## Floor Vents

- + Steel construction with ABS damper box
- + Suits both modern and period homes
- + Packaging – shrink wrapped with colour label in display carton



CODE	SIZE	QTY	CODE	SIZE	QTY
FBE3010	100x300mm (Beige)	6	FBE3515	150x350mm (Beige)	6
FCC3010	100x300mm (Charcoal)	6	FCC3515	150x350mm (Charcoal)	6

## Decorative Floor Vents

- + Stamped steel construction with acrylic damper box
- + Several styles to suit both modern and period homes
- + 100x300mm neck size (for heating)
- + 140x340mm face size
- + Packaging – shrink wrapped with colour label in display cartons



Manhattan



Scroll



Artistic



Geometric

CODE	DESCRIPTION	QTY	CODE	DESCRIPTION	QTY
FSNA3010	Satin Nickel Artistic 100x300mm	4	FBL53010	Black Scroll 100x300mm	4
FSNG3010	Satin Nickel Geometric 100x300mm	4	FABT3010	Antique Brass Manhattan 100x300mm	4
FRBS3010	Oil Rubbed Bronze Scroll 100x300mm	4			

## Kickboard Registers

- + White pressed steel construction
- + Includes adjustable metal damper
- + Packaging – shrink wrapped



CODE	SIZE	QTY	CODE	SIZE	QTY
4210212WH*	50x300mm	30	4210214WH*	50x350mm	30

## Wall Vents

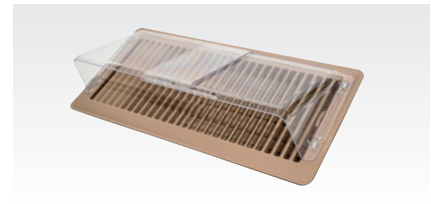
- + White pressed steel construction
- + Includes adjustable metal damper
- + Packaging – shrink wrapped



CODE	SIZE	QTY	CODE	SIZE	QTY
WV412B*	100x300mm	20	WV614B*	150x350mm	20
WV612B*	150x300mm	20			

## Air Deflectors

- + Heavy duty polycarbonate construction
- + Modern curved design
- + Packaging - shrink wrapped with colour label in display carton



CODE	SIZE	QTY	CODE	SIZE	QTY
1214HD	Small (100x300mm)	20	AD614	Large (100x400mm & 150x350mm)	20

## Floor Boots

- + Plastic construction
- + Butterfly damper included
- + Packaging - shrink wrapped



CODE	SIZE	QTY	CODE	SIZE	QTY
SL1246	100x300mm to 150mm (straight)	5	FB61410*	150x350mm to 250mm (angled)	6
FB6148*	150x350mm to 200mm (angled)	6			

## Louvered Return Air Grilles

- + Aluminium construction
- + Removable core
- + Mesh permatron-type filter on clip out frame
- + Easy to clean
- + Safety cable included
- + Packaging - shrink wrapped with cardboard protection



CODE	SIZE	QTY	CODE	SIZE	QTY
LR6040*	600x400mm	5	LR12040*	1200x400mm	5
LR7540*	750x400mm	5	LR12035*	1200x350mm	5
LR9040*	900x400mm	5	LR15040*	1500x400mm	5
LR10040*	1000x400mm	5			

## Return Air Floor Grilles

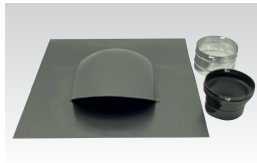
- + Steel construction with full powder coating
- + Includes mesh filter and frame
- + Packaging - shrink wrapped with cardboard protection



CODE	SIZE	QTY	CODE	SIZE	QTY
RF3050*	300x500mm (Beige)	4	RF4075*	400x750mm (Beige)	4
RF4060*	400x600mm (Beige)	4			

## Low Profile Roof Vents

- + Aluminium base with stainless steel dome
- + For tiled or metal roofs
- + BAL-40 compliant (steel mesh)
- + Replaces cowl, pipe and flashing
- + Can be installed under solar panels
- + Packaging - colour carton



CODE	SIZE	QTY	CODE	SIZE	QTY
RV565M	125-150mm (Surfmist)	4	RV685M	150-200mm (Surfmist)	4
RV565G	125-150mm (Shale Grey)	4	RV685G	150-200mm (Shale Grey)	4
RV56MM	125-150mm (Monument)	4	RV68MM	150-200mm (Monument)	4
RV56NS	125-150mm (Night Sky)	4	RV68NS	150-200mm (Night Sky)	4
RV56P	125-150mm (Paintable)	4	RV68P	150-200mm (Paintable)	4

## Aluminium Mushroom Cowl Vents

- + Spun aluminium construction
- + Ideal for rangehoods and air extraction
- + BAL-40 compliant (alum mesh)
- + Packaging - colour label



CODE	SIZE	QTY	CODE	SIZE	QTY
MCV100B	100mm	4	MCV200B	200mm	6
MCV125B	125mm	4	MCV250B	250mm	4
MCV150B	150mm	12			

## Galvanised Steel Pipe

- + 0.6mm galvanised steel construction with clip seam
- + Ideal for rangehood venting and air extraction
- + Fits Mushroom Cowls
- + Packaging - colour label



CODE	SIZE	QTY	CODE	SIZE	QTY
CP600100	600mm x 100mm	12	CP600200	600mm x 200mm	12
CP600125	600mm x 125mm	12	CP600250	600mm x 250mm	12
CP600150	600mm x 150mm	12			

## Snap-In Eave Vents

- + ABS construction
- + Installs in seconds
- + BAL-29 compliant (steel mesh)
- + Packaging - shrink wrapped with colour label



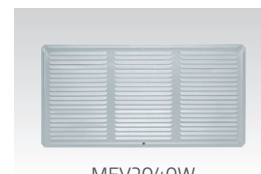
CODE	SIZE	QTY	CODE	SIZE	QTY
S150BAL	150mm (5 way)	12	S2003BAL	200mm (3 way)	8
S1503BAL	150mm (3 way)	12	S2503BAL	250mm (3 way)	6

## Metal Eave Vents – Twin Pack

- + Steel construction
- + BAL-40 compliant
- + Packaging – shrink wrapped with colour label in display carton



SEV2040W



MEV2040W

CODE	SIZE	QTY	CODE	SIZE	QTY
MEV2040W	200x400mm (White)	8	MEV2040G	200x400mm (Grey)	8
SEV2040W	200x400mm (White)	10			

## Aluminium Brick Vents

- + Brick size cut-out
- + Aluminium face with 150mm ABS adapter
- + BAL-40 rated (alum mesh)
- + Packaging – colour carton



CODE	SIZE	QTY	CODE	SIZE	QTY
BV150	150mm	4	BVK150	150mm x 2m 150mm rectangular ducting (kit)	4

## Aluminium Weatherproof Louvres

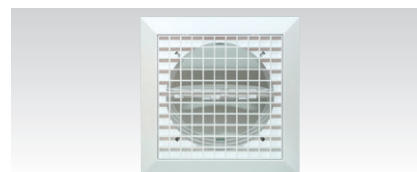
- + Galvanised steel adapter box
- + BAL-40 compliant (alum mesh)
- + Packaging – shrink wrapped with colour carton



CODE	SIZE	QTY	CODE	SIZE	QTY
VW100	100mm	4	VW200	200mm	2
VW125	125mm	4	VW250	250mm	2
WV150DB	150mm (double brick)	4			

## Snap-In Egg Crate Grilles

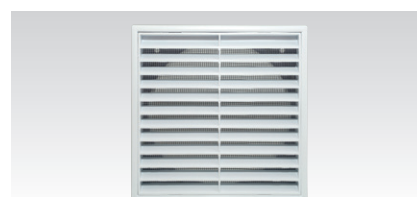
- + ABS construction
- + UV Stabilised removable core
- + Packaging – shrink wrapped with colour label



CODE	SIZE	QTY	CODE	SIZE	QTY
EC150	150mm	10	EC200	200mm	10

## Grille Vents

- + White PP or ABS construction
- + Screw in (screws included)
- + Hidden screw holes
- + BAL-19 compliant (alum mesh)
- + Packaging – shrink wrapped with colour label in display carton



CODE	SIZE	QTY	CODE	SIZE	QTY
GIV100	100mm (PP)	6	GIV150	150mm (PP)	6
GIV125	125mm (PP)	6	GIV200	200mm (ABS)	5

## Gravity Vents

- + Screw in (screws included)
- + Hidden screw holes
- + BAL-19 compliant (alum mesh)
- + White PP or ABS construction
- + Packaging - shrink wrapped with colour label in display carton



CODE	SIZE	QTY	CODE	SIZE	QTY
GAV100	100mm (PP)	6	GAV150	150mm (PP)	6
GAV125	125mm (PP)	6	GAV200	200mm (ABS)	5

## Aluminium Door Grilles

- + Anodised aluminium finish with clip-in design
- + Equalises pressure and circulates air between rooms
- + Suits doors from 30 to 50mm depth
- + Quoted size is cut-out size – face size is 35mm larger
- + Packaging - shrink wrapped with colour label



CODE	SIZE	QTY	CODE	SIZE	QTY
DRG3015	300x150mm	2	DRG6030	600x300mm	2
DRG6015	600x150mm	2	DRG6045	600x450mm	2

## Pressed Aluminium Vents

- + Powder coated aluminium construction
- + Screws not included
- + White or silver
- + Packaging - hang sell bag with colour label carton



CODE	SIZE	QTY	CODE	SIZE	QTY
1075W	100x75mm (White)	1	2215S	225x150mm (Silver)	1
1075S	100x75mm (Silver)	1	3015W	300x150mm (White)	1
1510W	150x100mm (White)	1	3015S	300x150mm (Silver)	1
1510S	150x100mm (Silver)	1	3030W	300x300mm (White)	1
2215W	225x150mm (White)	1	3030S	300x300mm (Silver)	1

## Aluminium Bar Grille

- + White powdercoat construction
- + Ideal for bathroom or laundry
- + 150mm adapter
- + Snap-in clips
- + Packaging - carton with colour label



CODE	SIZE	QTY
BG150	150mm	2

## Semi Rigid Ducting

- + 3m lengths 0.1mm aluminium construction
- + 4-zero fire rated to AS1530.3
- + Duct connectors also available
- + Packaging - shrink wrapped with colour label



CODE	SIZE	QTY	CODE	SIZE	QTY
SRD3060B*	60mm x 3m	1	SRD3200B	200mm x 3m	8
SRD3075B*	75mm x 3m	1	SRD3250B	250mm x 3m	6
SRD3100B	100mm x 3m	12	SRD3300B	300mm x 3m	6
SRD3125B	125mm x 3m	8	SRD3350B	350mm x 3m	4
SRD3150B	150mm x 3m	6			

## Flexible Ducting

- + Non-insulated and extra durable
- + Complies with AS4254.1
- + 4-zero fire rated to AS/NZS 1530.3
- + Packaging - 3m in colour box, 6m shrink wrapped with colour label



CODE	SIZE	QTY	CODE	SIZE	QTY
FDB1003	100mm x 3m (box)	8	FFD1006	100mm x 6m (bag)	14
FDB1253	125mm x 3m (box)	8	FFD1256	125mm x 6m (bag)	14
FDB1503	150mm x 3m (box)	8	FFD1506	150mm x 6m (bag)	14
FDB2003	200mm x 3m (box)	8	FFD2006	200mm x 6m (bag)	14

## Duct Connectors/Joiners

- + 0.6mm galvanised steel construction
- + Compatible with flexible and semi rigid ducting
- + Packaging - colour label



CODE	SIZE	QTY	CODE	SIZE	QTY
DJ100	100mm	8	DJ200	200mm	4
DJ125	125mm	8	DC250*	250mm	1
DJ150	150mm	8	DC300*	300mm	1

## Duct Reducers/Adapters

- + Galvanised steel or ABS construction
- + Ridged for easier installation and better connection
- + Packaging - colour label



CODE	SIZE	QTY	CODE	SIZE	QTY
DR100125	100-125mm	4	DR150200	150-200mm	4
DR100150	100-150mm	4	DR200250	200-250mm	4
DR125150	125-150mm (ABS)	4			

## Y Piece Connectors

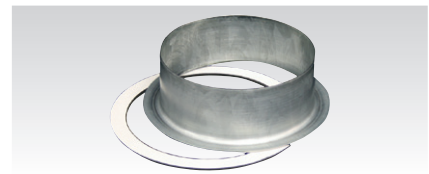
- + Black poly construction
- + Ideal for branching duct off the line
- + Often used with low profile roof vents
- + Packaging – none with plain label



CODE	SIZE	QTY	CODE	SIZE	QTY
Y666	150-150-150mm	3	Y668	150-150-200mm	4

## Rangehood Top Adapters

- + Galvanised steel flange
- + Double sided adhesive foam ring
- + Packaging – bag with colour label in display carton



CODE	SIZE	QTY	CODE	SIZE	QTY
RDA100	100mm	1	RRA150	150mm	4
RRA125	125mm	4			

## Backdraft Butterfly Dampers

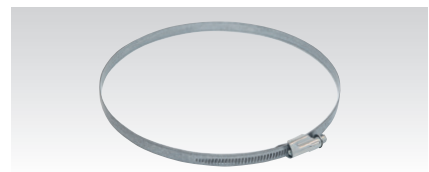
- + Galvanised steel casing
- + Spring loaded aluminium damper blades
- + Foam seal
- + Packaging – colour label



CODE	SIZE	QTY	CODE	SIZE	QTY
BD100	100mm	10	BD200	200mm	10
BD125	125mm	10	BD250*	250mm	10
BD150	150mm	10			

## Steel Clamps – Twin Pack

- + Stainless steel construction
- + Worm drive tightening mechanism
- + Install with flat head screwdriver head
- + Packaging – bag with colour label and display carton

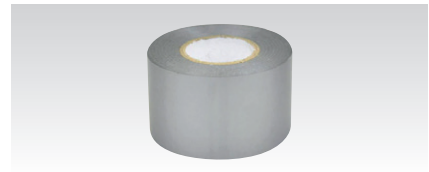


CODE	SIZE	QTY	CODE	SIZE	QTY
WC2100	100mm	10	WC2200	200mm	10
WC2125	125mm	10	SC250*	250mm (single)	1
WC2150	150mm	10	SC300*	300mm (single)	1



## PVC Duct Tape

- + High quality PVC construction
- + Recommended for use with steel worm clamps
- + Packaging – shrink wrapped with colour label in display carton
- + Display carton is ideal for shelf or counter



CODE	SIZE	QTY
PD348	48mm x 30m	18

## Gas Cowls

- + AGA approved under AS4566 (GMK10235)
- + 0.6 and 1.0mm galvanised steel construction
- + Packaging – colour label (Pacific Air)



CODE	SIZE	QTY	CODE	SIZE	QTY
GC100	100mm	12	GC150	150mm	4
GC125	125mm	4			

## Elbows/Bends

- + AS/NZ standard grade Z275 0.6mm galvanised steel construction
- + Packaging – bulk



CODE	SIZE	QTY	CODE	SIZE	QTY
EL45100*	45° and 100mm	30	EL45125*	45° and 125mm	30
EL90100*	90° and 100mm	20	EL90125*	90° and 125mm	20

## Bolted Sleeves

- + AS/NZ standard grade Z275 galvanised steel construction
- + Packaging – bulk

CODE	SIZE	QTY
BS100*	100mm	50
BS125*	125mm	50



## Flue Clips

- + AS/NZ standard grade galvanised steel construction
- + For use with Phillips or regular screw driver
- + Packaging – bulk

CODE	SIZE	QTY
FC100*	100mm	100
FC125*	125mm	100



## Hanging Brackets

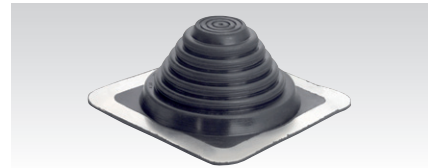
- + Galvanised steel construction
- + Packaging - bulk



CODE	SIZE	QTY	CODE	SIZE	QTY
HB30*	30cm	20	HB60*	58.5cm	20

## Roof Flashing

- + For metal (EPDM) or tiled roofs (EPDM and aluminium)
- + Metal roof flashing is BAL-12.5 certified



CODE	SIZE	QTY	CODE	SIZE	QTY
RFS	90-150mm (metal)	10	RFT	50-170mm (tiled)	5
AOE6B	165-267mm (metal)	10	VAEM7B	180-270mm (tiled)	5

## Inline Axial Fans

- + For venting roof, sub floor or room-to-room heat transfer
- + Can also be used with a ceiling fan as an exhaust
- + Easy screw-in mounting
- + DIY installation with plugs
- + Low noise
- + Compliant with 2022 NCC 10.8.2 (1) flow rate requirements
- + Packaging - colour display carton



CODE	SIZE	QTY	CODE	SIZE	QTY
ACF100	100mm - 149 m3/h	4	ACF200	200mm - 571 m3/h	4
ACF150	150mm - 330 m3/h	4			

## Header Box Fans

- + Super powerful 375 m3/h airflow
- + Ideal for new homes or replacement
- + DIY installation with plug
- + Low noise
- + 290mm cut-out - attaches to 150mm ducting
- + Compliant with 2022 NCC 10.8.2 (1) flow rate requirements
- + Packaging - colour display carton



CODE	SIZE	QTY	CODE	SIZE	QTY
RF250	Header Box Fan 250SX	4	RFT250	Header Box Fan 250SX with Timer	4

## Access Panels

- + Framed or frameless
- + Cutting template included
- + Packaging – shrink wrapped with colour label in display carton



CODE	SIZE	QTY	CODE	SIZE	QTY
AP2020	203x203mm Spring Loaded	6	AP1522	150x225mm Framed	6
AP3535	356x356mm Spring Loaded	4			

## Cone Diffusers

- + UV stabilised ABS construction resistant to discolouration
- + For cooling or heating & cooling applications
- + Easy snap-in installation
- + Air flow is adjustable by rotating the centre disk in the diffuser
- + Packaging – shrink wrap with round colour card as cut-out



CODE	SIZE	QTY	CODE	SIZE	QTY
CDR200	Cone Diffusers 200mm	10	CDR300	Cone Diffusers 300mm	5
CDR250	Cone Diffusers 250mm	10			

## Down Jet Diffusers

- + UV stabilised ABS construction resistant to discolouration
- + For heating or heating & cooling applications
- + Easy snap-in installation
- + Air flow is adjustable by pushing and twisting the centre disk
- + Packaging – shrink wrap with round colour card as cut-out



CODE	SIZE	QTY	CODE	SIZE	QTY
DJR150	Down Jet Diffuser 150mm	10	DJR200	Down Jet Diffuser 200mm	10

## Roof Vent Kits

- + Compliant with the fire rating requirements of AS3959–2009 up to BAL-12.5
- + Contemporary BAL-40 cowl with mesh – protects from insects and pests
- + 150mm ducting converts to 125mm applications with adapter (if required)
- + Contains all components to suit most installations (including flashing)
- + Packaging – colour carton



CODE	SIZE	QTY	CODE	SIZE	QTY
RKT125150	125/150mm (Tiled)	2	RKM125150	125/150mm (Metal)	2

## Sub Floor Vent Kits

- + Contains all key elements for most installations
- + Includes aluminium vent with neck adapter, ducting, axial fan, timer, clamps, duct tape and hanging tape
- + Can be extended with Y pieces and extra ducting
- + Packaging – carton with colour label



CODE	SIZE	QTY	CODE	SIZE	QTY
SFK150	150mm	1	SFK200	200mm	1

## Ceiling Vent Covers

- + White PVC construction
- + Prevents heat loss through evaporative cooler ceiling vents
- + Installs in minutes – hook and tab
- + Re-usable every winter
- + Packaging – bagged in display carton



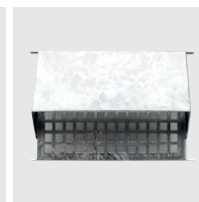
CODE	SIZE	QTY	CODE	SIZE	QTY
CVC400	Ceiling Vent Cover 400mm	20	CVC550	Ceiling Vent Cover 550mm	20

## Steel Wall Vents

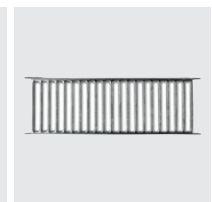
- + High grade 275 galvanised steel or SS construction
- + Protects from rising damp and excess moisture
- + Mesh versions are BAL-40 compliant
- + Packaging – display carton



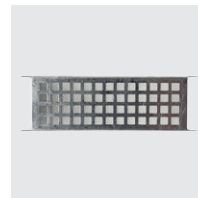
B2316



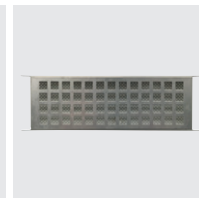
B2316H



B2375



B2375M



B2375SM



B2610



B2610M



B2620



B2315M

CODE	SIZE	QTY	CODE	SIZE	QTY
B2316	Brick Vent 230 x 165mm	20	B2610	Flat Face Vent 260 x 108mm	30
B2316H	Brick Vent Hooded w. Mesh 230 x 165mm	10	B2610M	Flat Face Vent w. Mesh 260 x 108mm	30
B2375	Brick Vent Slimline 230 x 75mm	20	B2620	Flat Face Vent 260 x 195mm	30
B2375M	Brick Vent Slimline Mesh 230 x 75mm	20	B2315M	Louvered Vent w. Mesh 230 x 150mm	20
B2375SM	Brick Vent Stainless Steel Slimline Mesh 230 x 75mm	20			