



# HURFORD'S

## CLADDING & WALL LINING



[www.hurfords.com.au](http://www.hurfords.com.au)





# WOOD ELEMENTS

REFINED ARCHITECTURAL HARDWOOD CLADDING

BY HURFORD'S

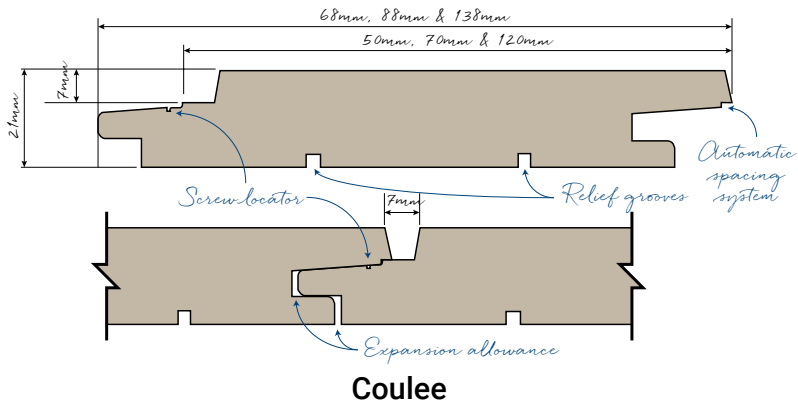
Choosing WOOD ELEMENTS exterior cladding for your home adds a warmth and timeless charm. Creating a connection to the natural environment and a living space for you to enjoy and relax in.

You have the option to select from three designer profiles all with their own unique look and in a range of Australian hardwood species. Only the highest quality and naturally durable Australian hardwood species have been selected to produce WOOD ELEMENTS. Rated Durability Class 1 under the Australian Standard AS 5604 -2005, these species provide the best result for lasting performance.

WOOD ELEMENTS complete system is the perfect choice for easy installation with its end matching, concealed screw fix, automatic spacing design, exclusive designer trims and Australian hardwood backed by Hurford's expertise in drying and machining ensuring a precision result.

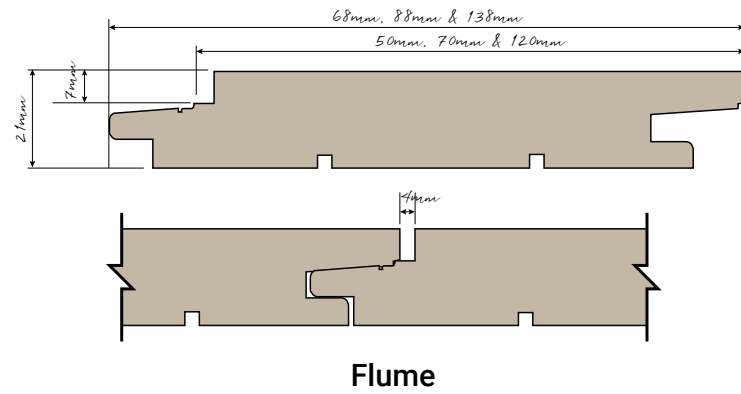


# Designer profiles

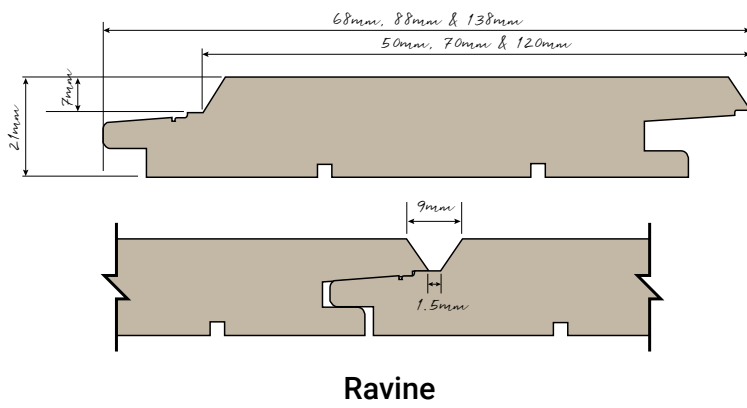


STRAIGHT-LINE  
DRESSED

MOISTURE  
BARRIER SYSTEM



DOUBLE DRIED  
TECHNOLOGY



MATCHED  
EDGE

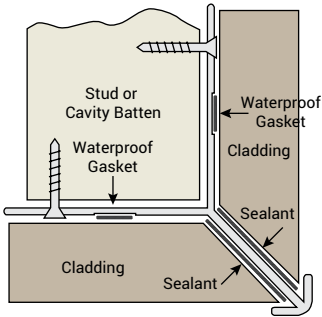
AUTOMATIC  
SPACING  
SYSTEM



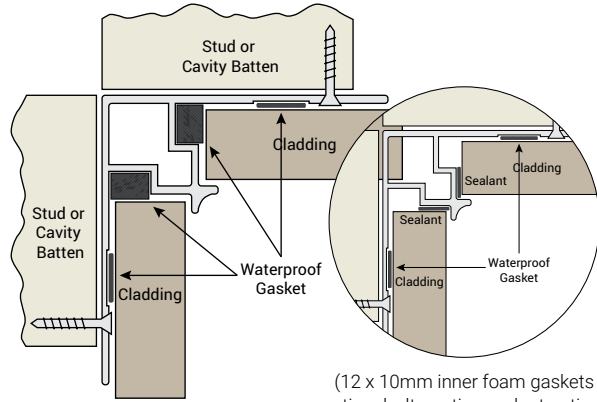


## Designer trims

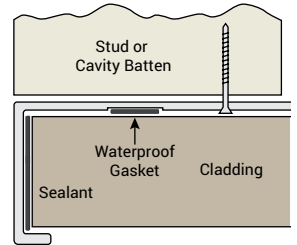
**Aluminium External Corner Stop**



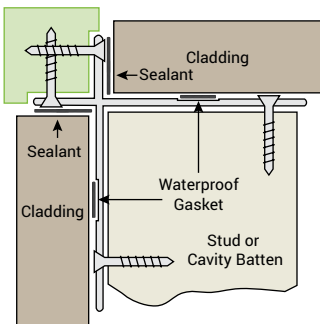
**Aluminium Internal Corner Stop**



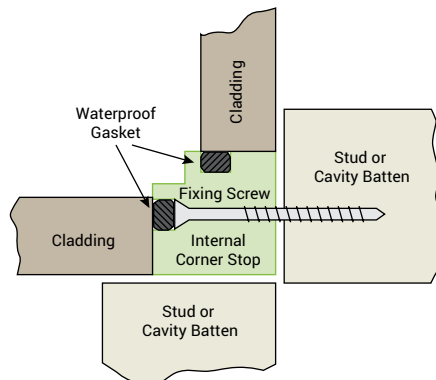
**External Cross With Timber Corner**



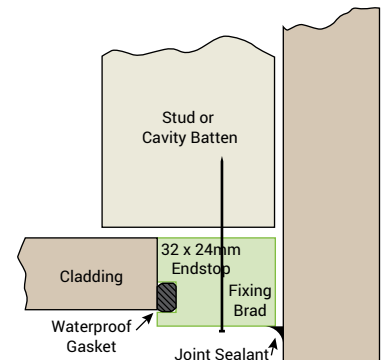
**Aluminium End Stop L**



**Timber Internal Corner Stop**



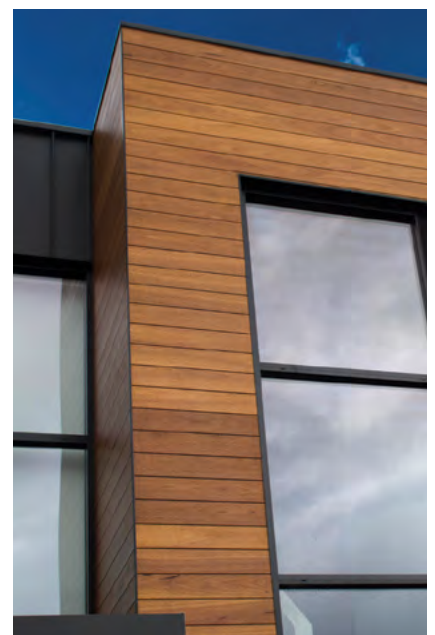
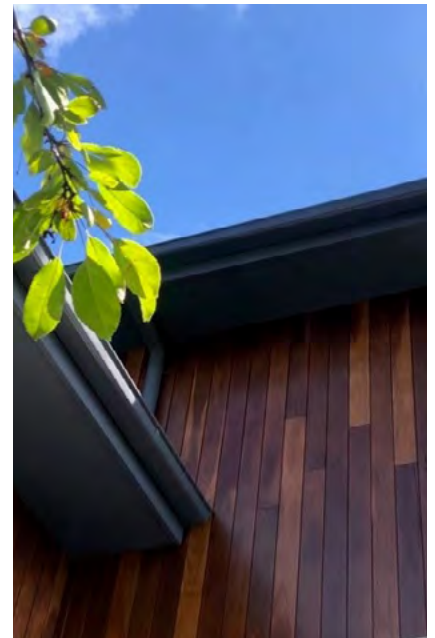
**Timber End Stop**





# Architectural specification

PRODUCT NAME	WOOD ELEMENTS CLADDING
Profile Name:	Coulee, Flume & Ravine
Species:	Blackbutt, Ironbark, Spotted Gum, Tallowwood & Turpentine
Appearance:	Dressed Face or Sawn Brushed Face
Size:	68mm, 88mm or 138mm x 21mm
Length:	Random
Grade:	Standard & Better
Moisture Content:	Per AS2796.1
Fixing:	WURTH ASSY@PLUS A2 DECKING CONSTRUCTION SCREW 0166115550 Available to purchase from Hurford's
Joining:	End Matched, Micro Bevel
Trim - External Corner:	1. Aluminium with fitted moisture proof gasket. 2. Wood with moisture proof gasket.
Trim - Internal Corner:	1. Aluminium with fitted moisture proof gasket. 2. Wood with moisture proof gasket.
Trim - End Stop:	1. Aluminium with fitted moisture proof gasket. 2. Wood with moisture proof gasket.
Pre-Oil Option:	Intergrain® Industrial Universal Timber Oil.





# Shou Sugi Ban

REFINED ARCHITECTURAL CLADDING

燒杉板

---

BY HURFORD'S





## Achieve great design without great effort by integrating our charred timber cladding into your next designs façade.

Hurford's Shou Sugi Ban Refined Architectural Cladding combines the ancient Japanese craft of fire treatment with a precision milled, architectonic cladding profile. It is a complete solution for any exterior wall, offering not just the cladding but a selection of customised trims to ensure a streamline execution and watertight result.

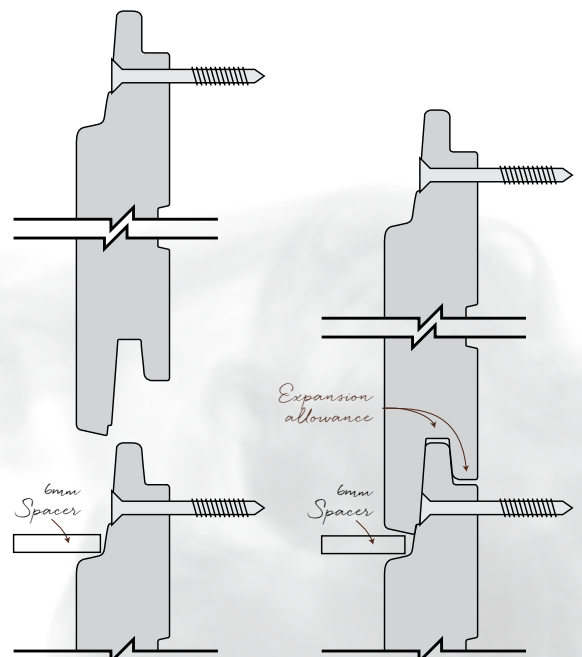
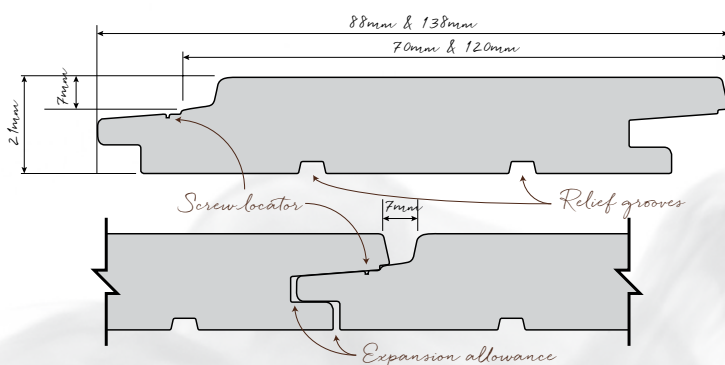


**Moisture  
Barrier System**



**End  
Matching**

### Profile Design Coulee









# Maintenance

It is well known that any timber left uncoated and exposed to direct or indirect sunlight will inevitably weather and grey off. Hurford's Shou Sugi Ban Refined Architectural Cladding is no exception.

Shou Sugi Ban is supplied pre-oiled with Intergrain Industrial Solid Timber Stain, Charred Black to assist in the protection from aging and colour change. During installation it is required you coat any sawn cut exposed ends with Intergrain Industrial Solid Timber Stain, Charred Black or Feast Watson Timber and Deck Stain, Black Japan. Once Shou Sugi Ban Refined Architectural Cladding is installed, you will need to apply a second coat of Intergrain Industrial Solid Timber Stain, Charred Black or Feast Watson Timber and Deck Stain, Black Japan.

Periodic maintenance, including reapplying a fresh coat of Intergrain Industrial Solid Timber Stain, Charred Black or Feast Watson Timber and Deck Stain, Black Japan is required to maintain the dark burnt texture of the product. Leaving the product unmaintained or uncoated will lead to the dark Shou Sugi Ban to naturally patina and age, changing its appearance. This change in appearance will not affect the performance of the product.

For more information on Intergrain Industrial Solid Timber Stain, Charred Black maintenance or to find a stockist please visit their website [www.intergrain.com.au](http://www.intergrain.com.au) or phone FREECALL 1800 630 285.

For more information on Feast Watson Timber and Deck Stain, Black Japan maintenance or to find a stockist please visit their website [www.feastwatson.com.au](http://www.feastwatson.com.au) or phone FREECALL 1800 252 502.



# Specifications

## CLADDING

Profile: Coulee

Width: 88mm (70mm cover) & 138mm (120mm cover).

Cypress is also available in 118mm (100mm cover).

Thickness: 21mm

Length: Random

Moisture Content: AS1080.1

Fixing: Concealed fixing

Species: Cypress, Durable Australian Hardwoods, BAL-29 Australian Hardwoods

Joining: End-matched, micro bevel

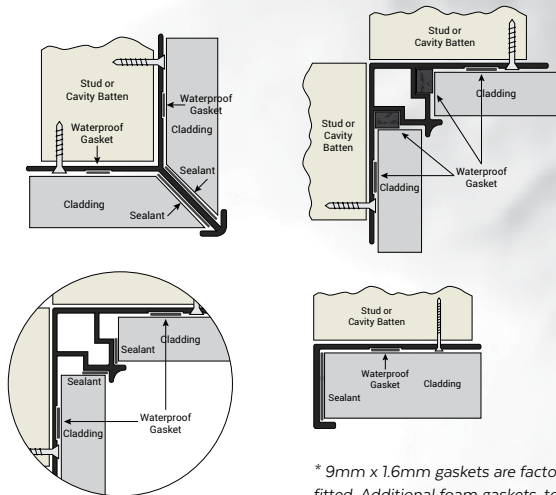
Finish: Intergrain Industrial Solid Timber Stain, Charred Black

## TRIMS

External Corner: Powdercoated Aluminium

Internal Corner: Powdercoated Aluminium

End Stop: Powdercoated Aluminium



(12 x 10mm inner foam gaskets optional, alternative sealant option)

\* 9mm x 1.6mm gaskets are factory fitted. Additional foam gaskets, to form second moisture barrier, are available in rolls for on-site installation, or alternative sealant method can be implemented.







# woodLINE

contemporary timber lining **BY HURFORD'S**



# Contemporary timber lining

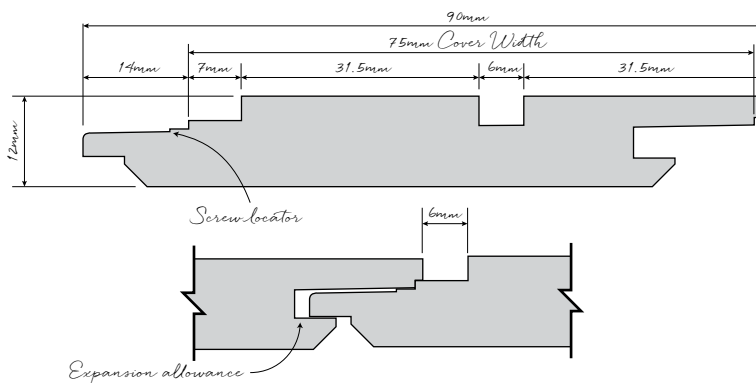
woodLINE brings a modern contemporary style to an interior or undercover patio space and can be installed vertically, horizontally or diagonally. The hidden tongue and groove joining system allows a quick and easy install with a line indicating where to nail. Not only does woodLINE look impressive, but it also provides a texture element in a selection of Australian hardwood timber species – Blackbutt, Brush Box, Grey Ironbark, Silvertop, Spotted Gum and Sydney Blue Gum.

woodLINE is reversible with a choice of profiles – Two Strip, Shadow Line or Open VJ. The profile Two Strip visually provides a multiple modern clean line option, with a one board installation. The popular Shadow Line profile presents with a sleek edged join, making a stylish statement throughout a home. Open VJ profile is a classic design, delivering a traditional look in a contemporary home.

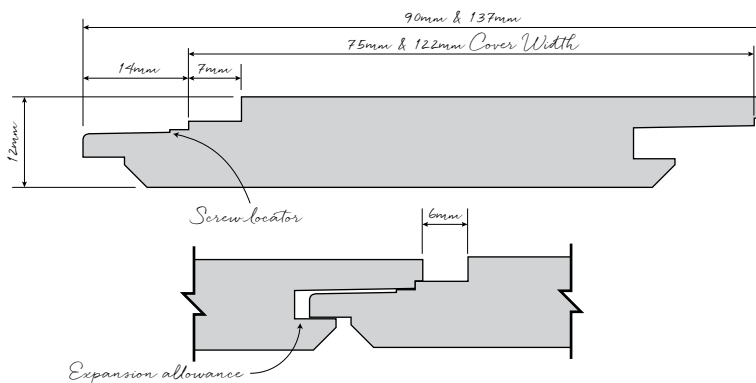
## Diagram Drawings

### Two Strip

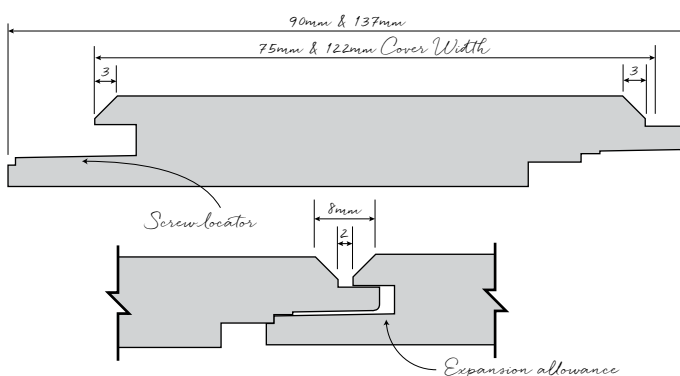
\* Available only in size 75 x 12mm



### Shadow Line



### Open VJ



## Product Specification

**Species** Blackbutt, Brush Box, Grey Ironbark, Silvertop, Spotted Gum and Sydney Blue Gum

**Sizes** 75 x 12mm, 122 x 12mm

**Length** Random (.6 to 4.5 in length)

**Profiles** Two Strip Reversible Open VJ, Shadow Strip Reversible Open VJ, End Matched

**Grades** Prestige or Rustic

**Pre-Oil** Yes available on request



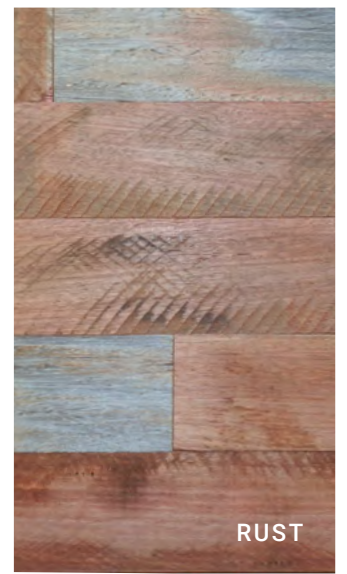


 **barnWALL**  
REPURPOSED HARDWOOD LINING

---

BY HURFORD'S





## Repurposed hardwood lining

barnWALL is a natural timber wall lining that has been repurposed from ageing, disused hardwood, that was once destined to be forgotten.

barnWALL has a natural ashen patina, created by years of harsh weathering, which can be seen on each individual piece. This establishes a very unique industrial look that will transform the identity of a space, creating a raw modern atmosphere.

Including only the most individual naturally occurring and man-made features, barnWALL is a high feature product that complements any interior bringing a brutal rustic sawn look and feel.

Although barnWALL has a authentic aged appearance it has been dried, machined & manufactured to strict modern tolerances.

### Product Specification

<b>Species</b>	SAND – Mixture of Blonde Australian Hardwoods RUST – Mixture of Red Australian Hardwoods
<b>Seasoning</b>	Kiln Dried
<b>Size</b>	83mm x 12mm
<b>Profile</b>	T&G, Square Edge, Plain End
<b>Face</b>	Aged miss – partially dressed aged appearance
<b>Grade</b>	Conservation - Making the most out of the precious resource, Conservation grade focuses on the highest amount of natural and man-made features. This unique product gives a true industrial appearance.
<b>Length</b>	Random – 450mm to 3000mm



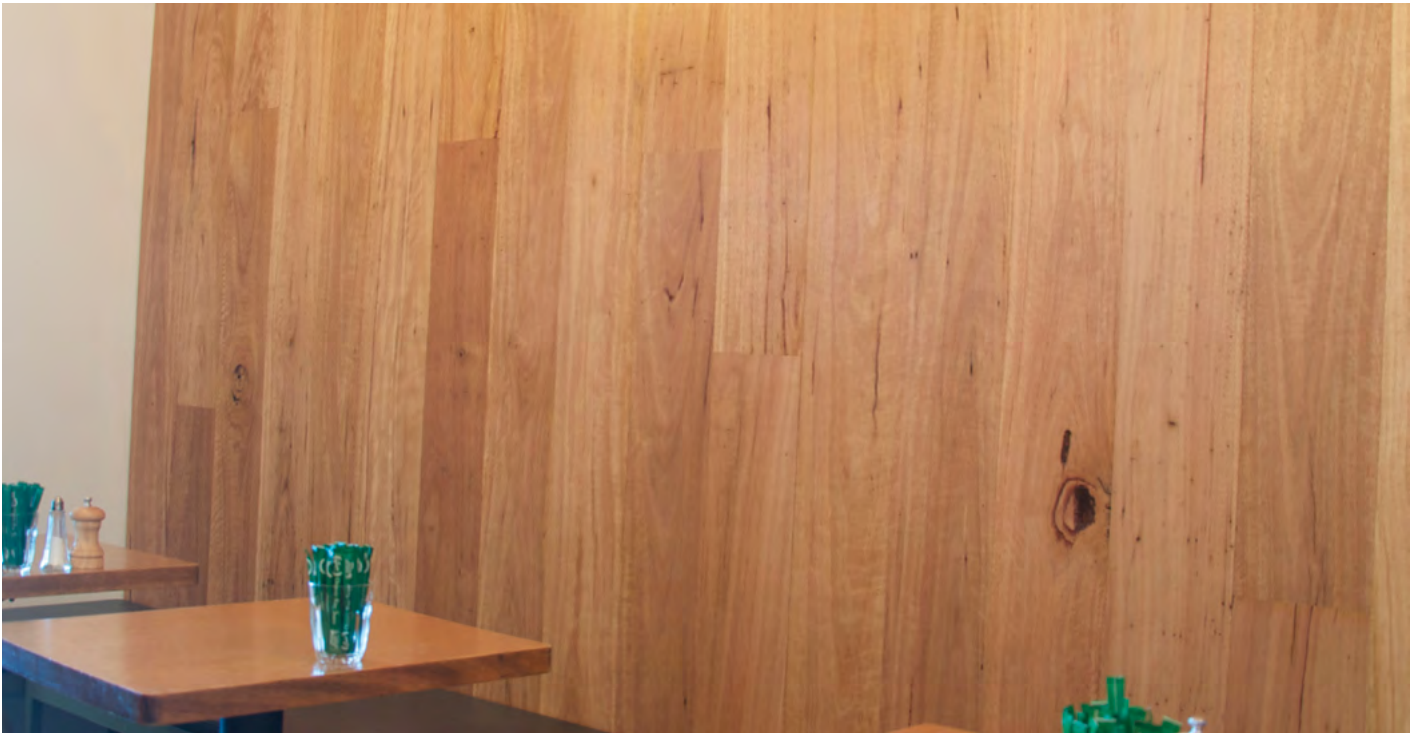


  
**hardWALL**  
INDUSTRIAL HARDWOOD LINING  

---

**BY HURFORD'S**





hardWALL is a natural timber wall lining that offers a very unique industrial look that will transform the identity of a space, creating a raw modern atmosphere.

Including only the most individual naturally occurring and manmade features, hardWALL is a high feature product that complements any interior bringing a brutal rustic look and feel.

Each feature represents a period of time that the forest has gone through, whether it is the dense tight grain caused by drought, or dark rouged gum veins caused by scorching wildfires, these features are a chronicle of the history of hardWALL.

### Product Specification

<b>Species</b>	Lights – Blackbutt, Tallowwood, Grey Box Reds – Blue Gum , Red Iron Bark Darks – Brush Box, Spotted Gum, Grey Iron Bark
<b>Profile</b>	Square Edged Tongue & Grooved, End Matched
<b>Thickness</b>	14mm
<b>Width</b>	130mm, 180mm
<b>Grade</b>	Conservation – Making the most out of the precious resource, Conservation grade focuses on the highest amount of natural and manmade features. This unique product gives a true industrial appearance.



*Note - hardWALL is not intended to be used as a flooring product.*





### **Queensland**

400 Stapylton-Jacobs Well Road,  
Stapylton QLD 4207  
(07) 3442 6300  
salesqld@hurfordwholesale.com.au

### **New South Wales & Australian Capital Territory**

Unit 6, 34-38 Anzac Avenue,  
Smeaton Grange NSW 2567  
(02) 4646 1406  
salesnsw@hurfordwholesale.com.au

### **Victoria & Tasmania**

51 Commercial Drive,  
Pakenham VIC 3810  
(03) 8794 3300  
salesvic@hurfordwholesale.com.au

### **South Australia & Northern Territory**

7-9 Acorn Road,  
Camden Park SA 5038  
(08) 8376 6694  
salessa@hurfordwholesale.com.au

### **Western Australia**

2-5 Carbonate Road,  
Wangara WA 6065  
0448 132 955  
saleswa@hurfordwholesale.com.au

